

WHISPERING OAKS

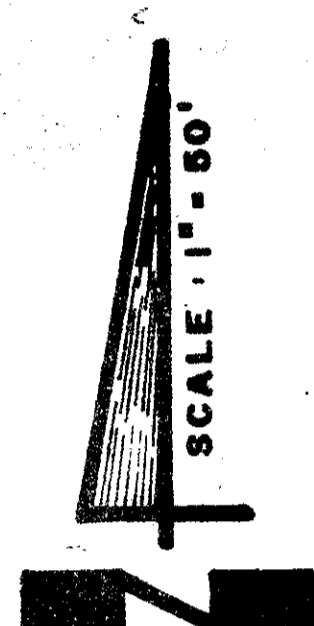
(A P.R.D.)

SITUATE IN SECTION 5, TOWNSHIP 44 SOUTH, RANGE 42 EAST, PALM BEACH COUNTY, FLORIDA.
BEING A REPLAT OF A PORTION OF BLOCK 7, TRACTS 38, 47 & 48 OF PALM BEACH FARMS COMPANY
PLAT NO. 3 AS IN PLAT BOOK 2, PAGES 45 THRU 54.

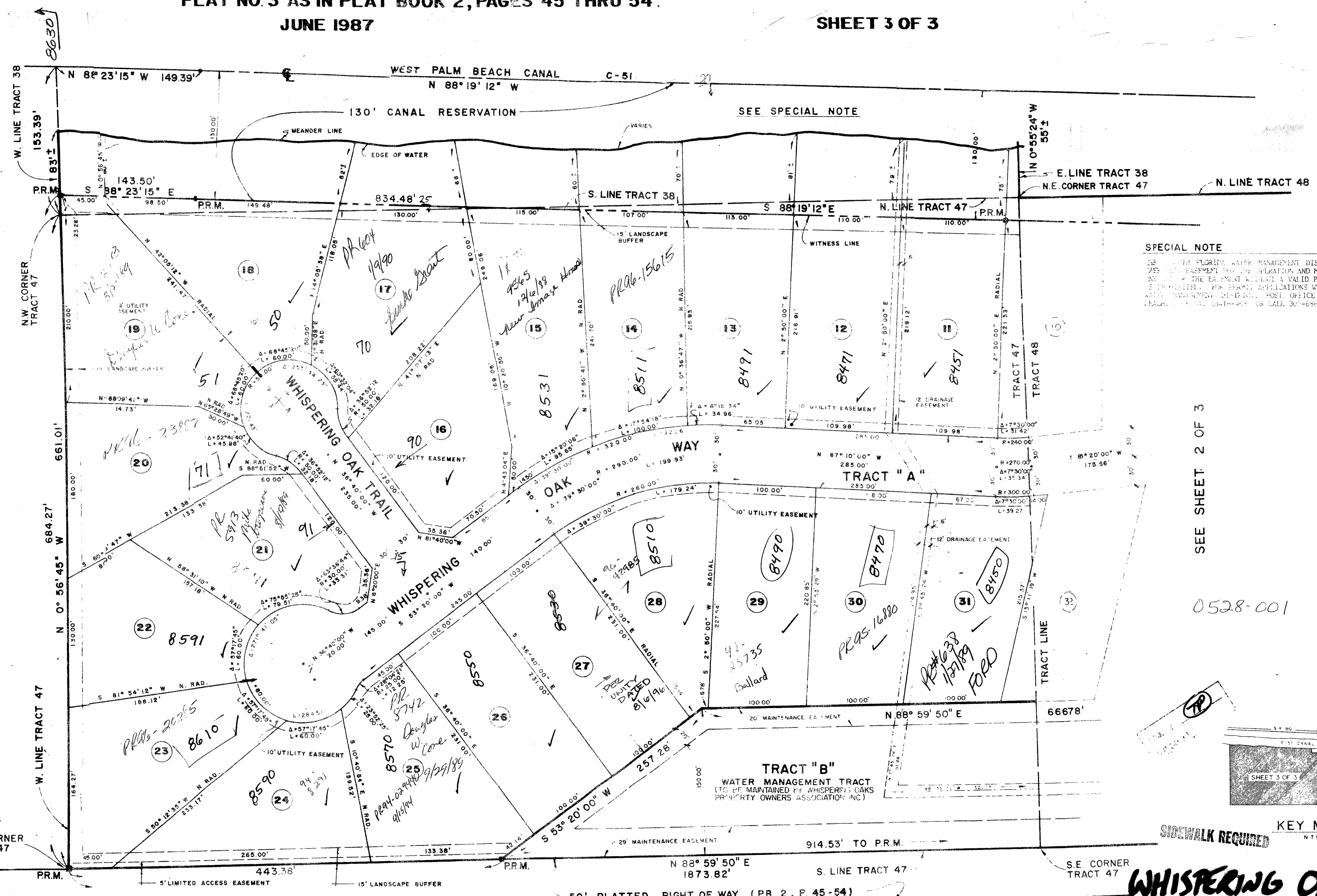
JUNE 1987

SHEET 3 OF 3

THIS DAY OF
AD, 1987 AND DULY RECORDED
IN PLAT BOOK _____ ON PAGES
AND _____
JOHN B. DUNKLE, CLERK
BY: _____, D. C.



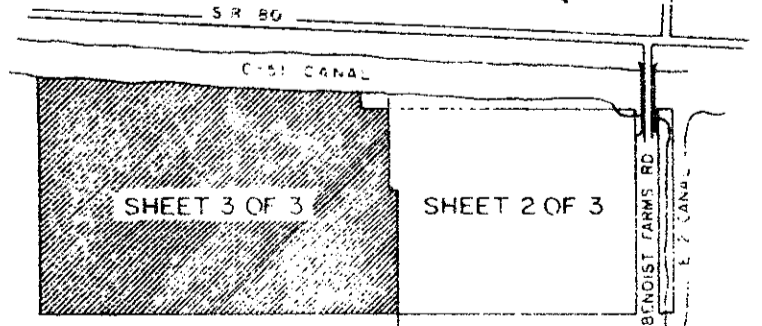
TRACT 46 (P.B. 2, P. 45-54)



SPECIAL NOTE
THE SOUTH FLORIDA ANNE MANAGEMENT DISTRICT HAS JURISDICTION OVER THE EASEMENT FOR THE OPERATION AND MAINTENANCE OF CANAL 51. ANYONE WHOSE EASEMENT WITHIN A VALID PERMIT FROM THE DISTRICT IS RESPONSIBLE FOR PERMIT APPLICATIONS WRITE FOR: SOUTH FLORIDA ANNE MANAGEMENT DISTRICT, POST OFFICE BOX 12000, WEST PALM BEACH, FLORIDA 33411-0002 OR CALL 305-656-5241.

SEE SHEET 2 OF 3

0528-001
SIDWALK REQUIRED
See Doug McShane with Co. Eng. 1/1/92
Ret. 86-108
RTS PRD
Assoc. #1001



733
SUBDIVISION * Whispering Oaks
BOOK 58
FLOOD ZONE 1B
CEAS 47
SEPRD 86-108
PUD NAME 33411

KEY MAP
NTS
SIDWALK REQUIRED
WHISPERING OAKS
58/100